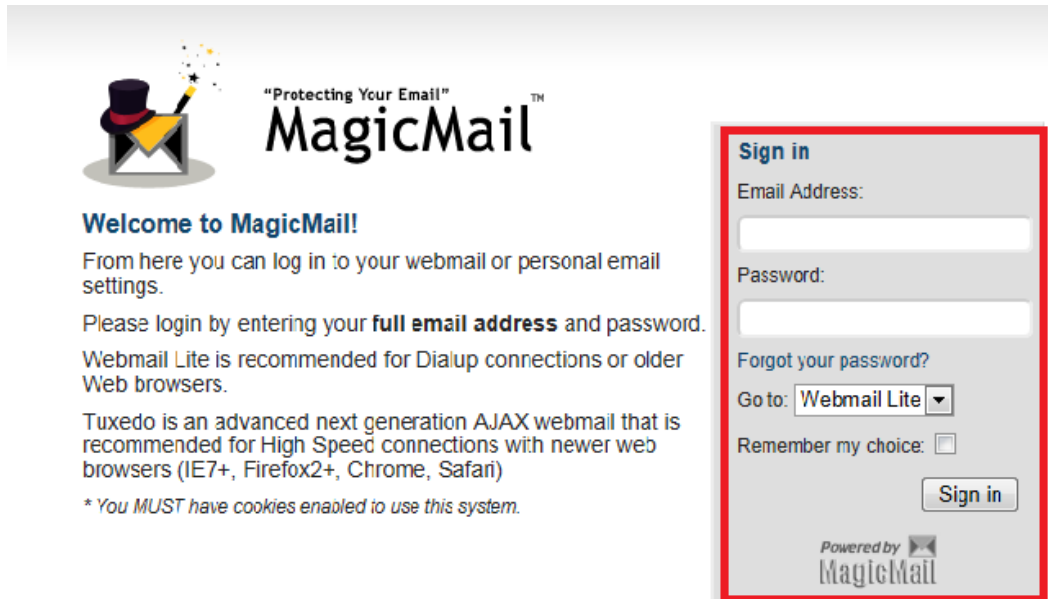


Password Change How to...

To change existing email passwords please visit our mail server at <https://mail.b2xonline.com>

Along the right hand side of the page you will see a place to check your email.



Protecting Your Email™
MagicMail

Welcome to MagicMail!
From here you can log in to your webmail or personal email settings.
Please login by entering your **full email address** and password.
Webmail Lite is recommended for Dialup connections or older Web browsers.
Tuxedo is an advanced next generation AJAX webmail that is recommended for High Speed connections with newer web browsers (IE7+, Firefox2+, Chrome, Safari)
** You MUST have cookies enabled to use this system.*

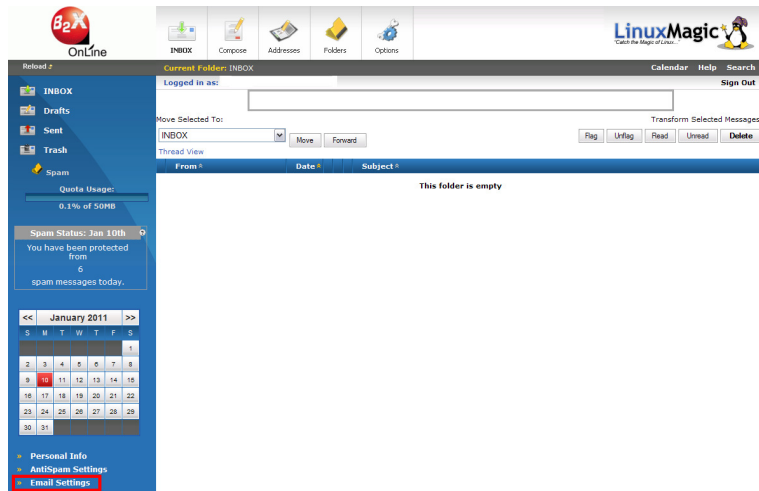
Sign in
Email Address:
Password:
Forgot your password?
Go to: Webmail Lite
Remember my choice:
Sign in
Powered by MagicMail

B2X Online, Inc
30 Mill Lane, Salem Va. 24153
Phone: 540-389-7924 or Fax: 540-387-4491
technical@b2xonline.com

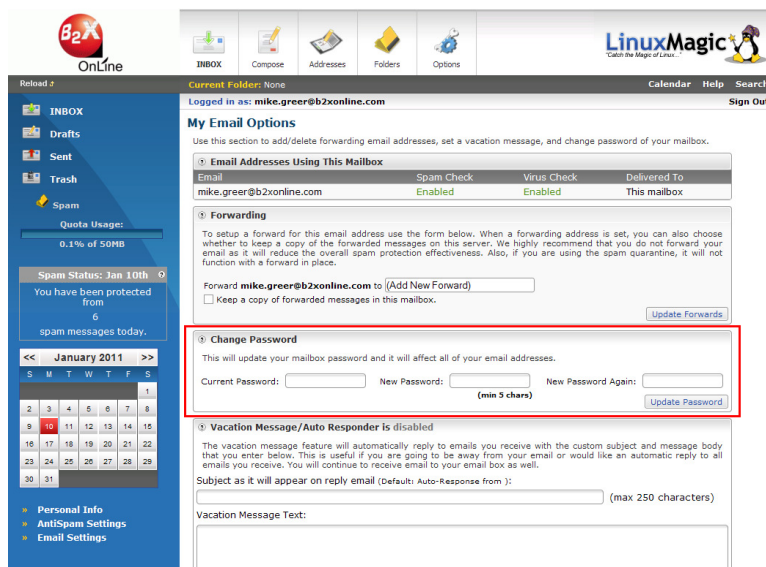
Copyright © LinuxMagic™ Inc. 2002-2013 All Rights Reserved.

Log in using your current credentials, (ie. full email address including the @b2xonline.com and your current password)

Once logged in you will notice an option at the bottom left of the screen that reads “Email Settings”, click here.



Once here you will see the second section on the page that reads “Change Password.”



Remember to enter the new password twice in the appropriate boxes. **The new password should be at least 5 characters long and include CAPITOL and lower case letters and at least one number.** Please make note of the new password for your records.

Also remember to change your passwords for you email client (ie. Outlook, Outlook Express, Thunderbird etc.)

If you have problems please contact Technical Support Monday –Friday, 8:30am-5:00pm at 540-389-7924(option 2) and we will be more then happy to assist you.