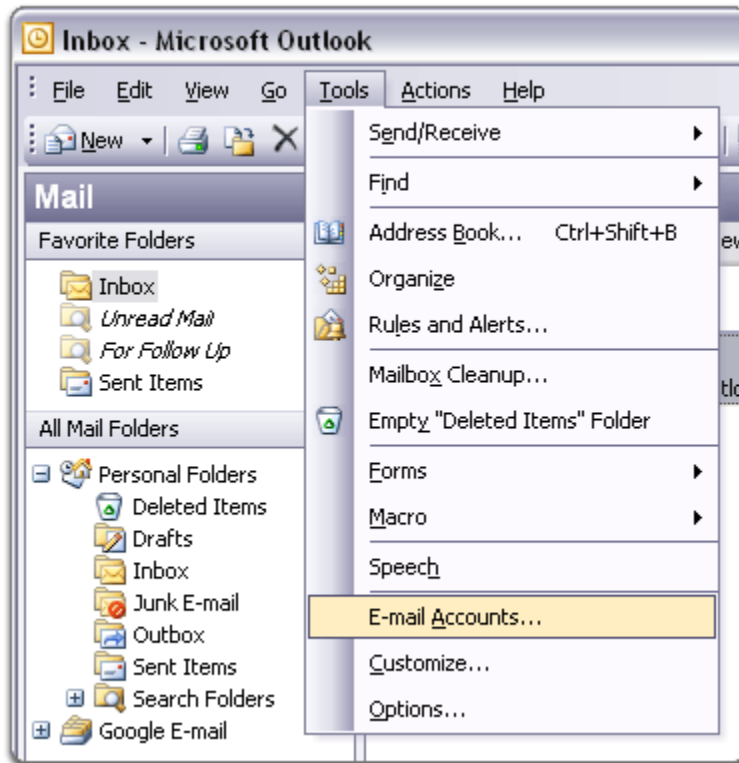
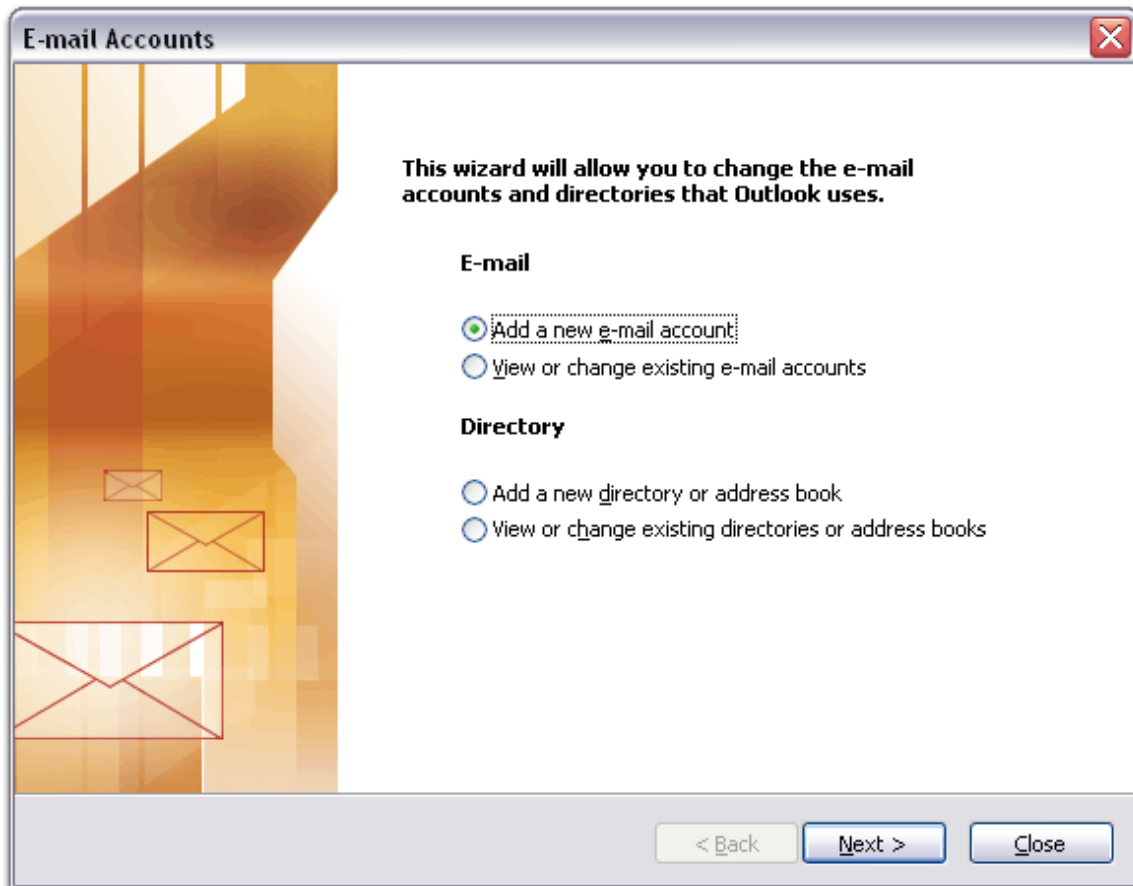


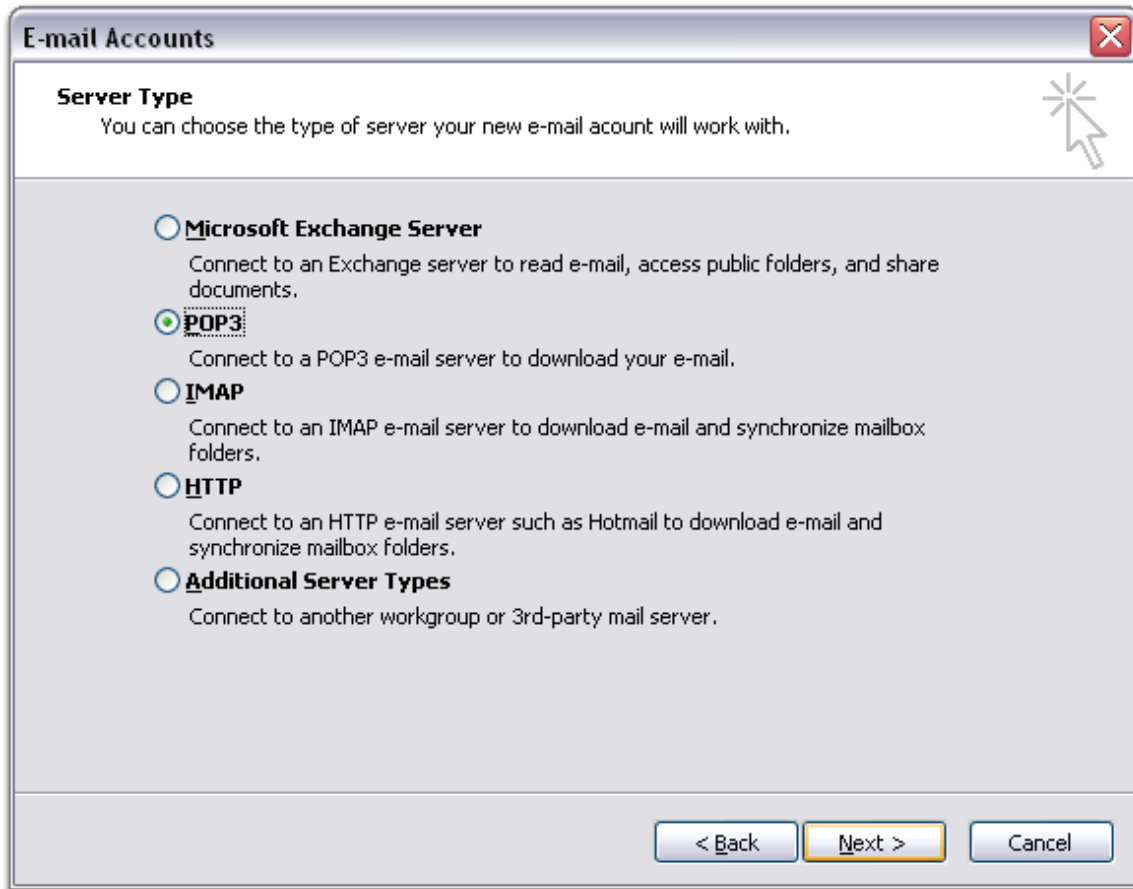
1. Open Outlook 2003.
2. Click the 'Tools' menu, and select 'E-mail Accounts...'



3. Select 'Add a new e-mail account,' and click 'Next.'



4. Choose 'POP3' as your server type by clicking the radio button, and click 'Next.'



5. Fill in all necessary fields to include the following information:

User Information

Your Name: Enter your name as you would like it to appear in the 'From:' field of outgoing messages.

Email Address: Enter your full email address (username@b2xonline.com)

Server Information

Incoming mail server (POP3): mail.b2xonline.com

Outgoing mail server (SMTP): mail.b2xonline.com

Login Information

User Name: Enter your username (including '@b2xonline.com')

Password: Enter your password

The screenshot shows a Windows-style dialog box titled "E-mail Accounts". The main heading is "Internet E-mail Settings (POP3)" with a sub-note: "Each of these settings are required to get your e-mail account working." The dialog is divided into four sections: "User Information", "Server Information", "Logon Information", and "Test Settings".

- User Information:** "Your Name:" field contains "Fred Farkle"; "E-mail Address:" field contains "fredfarkle@b2xonline.com".
- Server Information:** "Incoming mail server (POP3):" field contains "mail.b2xonline.com"; "Outgoing mail server (SMTP):" field contains "mail.b2xonline.com".
- Logon Information:** "User Name:" field contains "fredfarkle@b2xonline.com"; "Password:" field contains "*****"; a "Remember password" checkbox is checked; a "Log on using Secure Password Authentication (SPA)" checkbox is unchecked.
- Test Settings:** A text block reads: "After filling out the information on this screen, we recommend you test your account by clicking the button below. (Requires network connection)". Below this is a "Test Account Settings ..." button.

At the bottom right is a "More Settings ..." button. At the very bottom are three navigation buttons: "< Back", "Next >", and "Cancel".

6. Click 'Next,' and then click 'Finish.'

7. Click 'Send/Receive' and you should have a new piece of mail from B2X Online. There are instructions on how to change your password and check your mail from any Internet connection via a web browser.