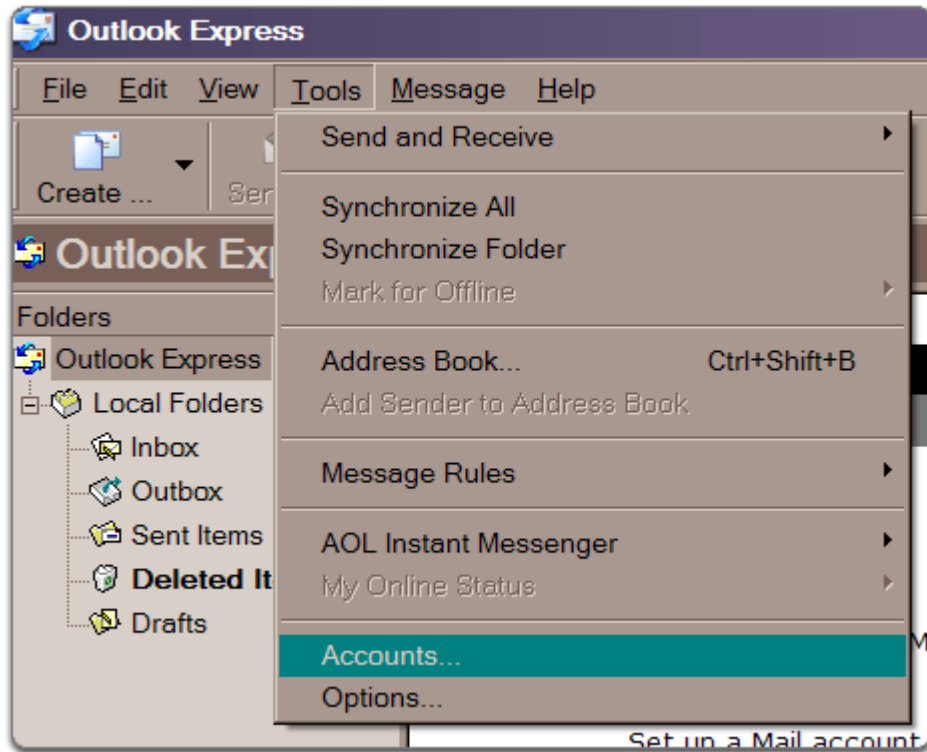
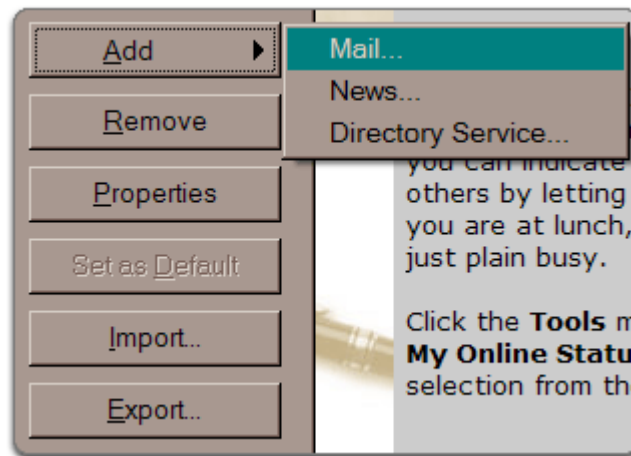


1. Open Outlook or Outlook Express.
2. Click the 'Tools' menu, and select 'Accounts...'



3. Click 'Add,' and then click 'Mail...'



4. Enter your name in the 'Display name:' field, and click 'Next.'



The screenshot shows a dialog box titled "Internet Connection Wizard" with a close button (X) in the top right corner. Below the title bar is a section labeled "Your Name" with a help icon (a starburst with a mouse cursor) to its right. The main area contains the following text: "When you send e-mail, your name will appear in the From field of the outgoing message. Type your name as you would like it to appear." Below this is a label "Display name:" followed by a text input field containing "Fred Farkle". Underneath the input field is the text "For example: John Smith". At the bottom of the dialog box are three buttons: "< Back", "Next >", and "Cancel".

Internet Connection Wizard

Your Name


When you send e-mail, your name will appear in the From field of the outgoing message.
Type your name as you would like it to appear.

Display name:

For example: John Smith

< Back Next > Cancel

5. Enter your full email address (username@b2xonline.com) in the 'Email address:' field, and click 'Next.'
6. Enter 'mail.b2xonline.com' in the 'Incoming mail (POP3, IMAP or HTTP) server:' field.
7. Enter 'smtp.b2xonline.com' in the 'Outgoing mail (SMTP) server:' field. Click 'Next.'
8. Enter your B2X Online username (including '@b2xonline.com') in the 'Account name:' field. Enter your B2X Online password in the 'Password:' field, and click 'Next.'



The screenshot shows a dialog box titled "Internet Connection Wizard" with a sub-header "Internet Mail Logon". The main instruction reads: "Type the account name and password your Internet service provider has given you." There are two input fields: "Account name:" containing "fredfarkle@b2xonline.com" and "Password:" containing seven dots. Below the password field is a checked checkbox labeled "Remember password". A paragraph of text explains that if the provider requires Secure Password Authentication (SPA), the "Log On Using Secure Password Authentication (SPA)" checkbox should be selected. This checkbox is currently unchecked. At the bottom, there are three buttons: "< Back", "Next >", and "Cancel".

9. Click 'Finish.'
10. Highlight 'mail.b2xonline.com' under 'Account,' and click 'Set as Default.' When sending new mail messages, they will be sent from your new B2X Online account.
11. Click 'Close.'
12. Click 'Send/Receive' and you should have a new piece of mail from B2X Online. There are instructions on how to change your password and check your mail from any Internet connection via a web browser.