

Configure your PC to use DHCP

Overview

The instructions in this chapter will help you configure each of your computers to be able to communicate with the Router.

To do this, you need to configure your PC's network settings to obtain an IP (or TCP/IP) address automatically (called DHCP). Computers use IP addresses to communicate with each other across a network or the Internet.

Find out which operating system your computer is running, such as Windows 95, 98, Millennium, NT 4.0, 2000, or XP. You will need to know which operating system your computer is running. You can find out by clicking the Start button and then going to the Settings option. Then click Control Panel, and then double-click the System icon. If your Start menu doesn't have a Settings option, you're running Windows XP. Click the Cancel button when done.

You may need to do this for each computer you are connecting to the Router.



Important: *These instructions apply only to Windows 95, Windows 98, Windows Millennium, Windows 2000, or Windows XP machines. For TCP/IP setup under Windows NT, see your Windows manual. By default Windows 98, 2000, Me, and XP has TCP/IP installed and set to obtain an IP address automatically.*

The next few pages tell you, step by step, how to configure your network settings based on the type of Windows operating system you are using. Make sure that an Ethernet card or adapter has been successfully installed in each PC you will configure.

Configuring Windows 95, 98 and Millennium PCs

1. Go to the Network screen by clicking the Start button. Click Settings and then Control Panel. From there, double-click the Network icon.
2. On the Configuration tab, select the TCP/IP line for the applicable Ethernet adapter, as shown in Figure 7- 1. Do not choose a TCP/IP entry whose name mentions DUN, PPPoE, VPN, or AOL. If the word TCP/IP appears by itself, select that line. (If there is no TCP/IP line listed, refer to “Appendix D: Installing the TCP/IP Protocol” or your Ethernet adapter’s user guide to install TCP/IP now.) Click the Properties button.

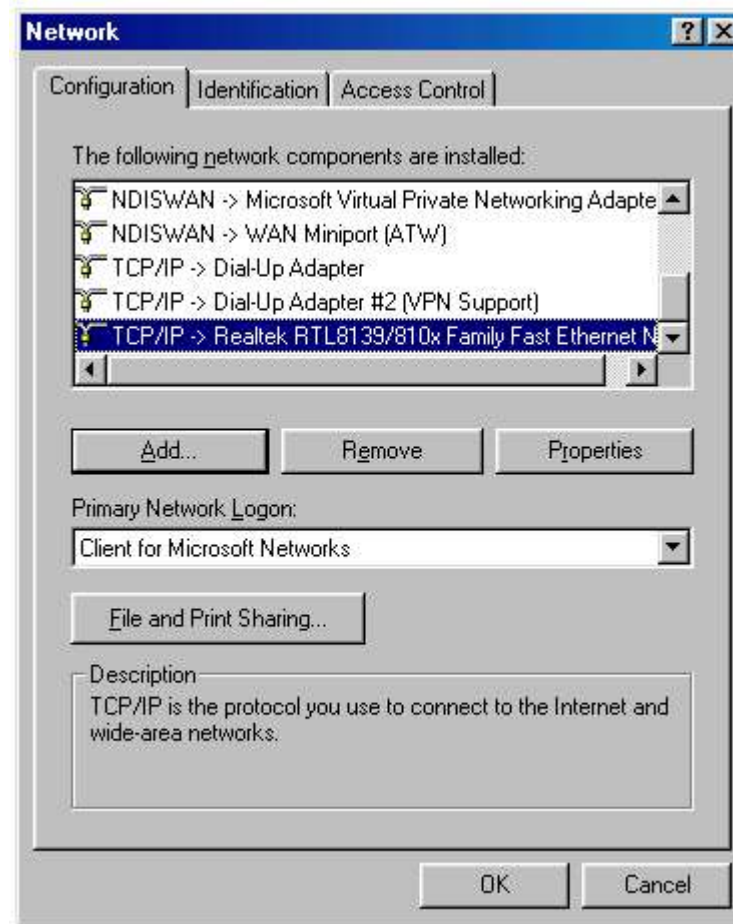


Figure 7- 1

3. Click the IP Address tab and select Obtain an IP address automatically, as shown in Figure 7-2.

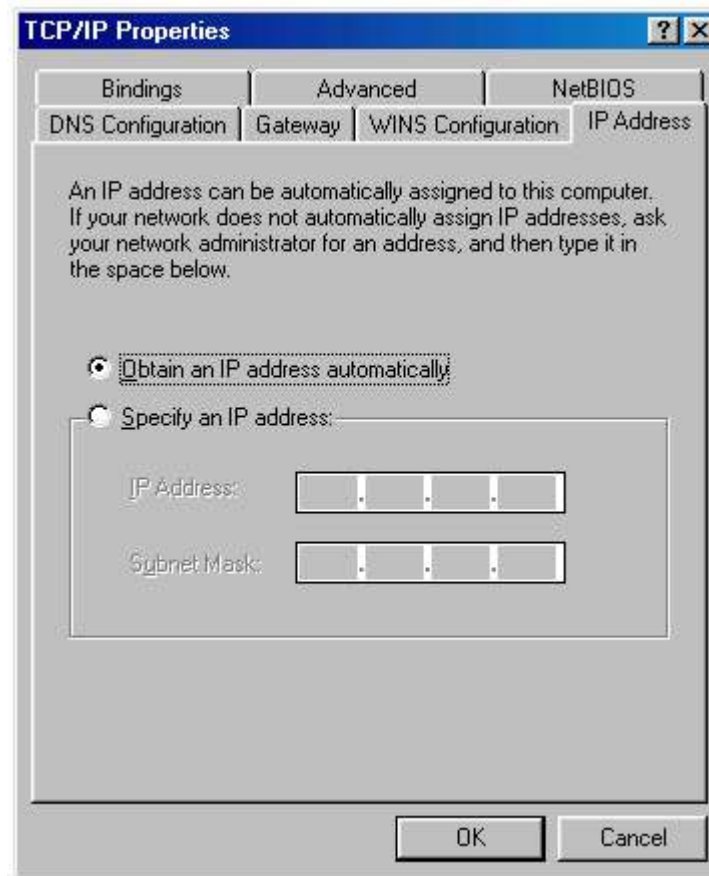


Figure 7-2

4. Now click the Gateway tab to ensure that the Installed Gateway field is left blank. Click the OK button.

5. Click the OK button again. Windows may ask you for the original Windows installation disk or additional files. Supply them by pointing to the correct file location, e.g., D:\win98, D:\win9x, c:\windows\options\cabs, etc. (if "D" is the letter of your CD-ROM drive).

6. Windows may ask you to restart your PC. Click the Yes button. If Windows does not ask you to restart, restart your computer anyway.

Configuring Windows 2000 PCs

1. Go to the Network screen by clicking the Start button. Click Settings and then Control Panel. From there, double-click the Network and Dial-up Connections icon.

2. Select the Local Area Connection icon for the applicable Ethernet adapter (usually it is the first Local Area Connection listed). Do not choose a TCP/IP entry whose name mentions DUN, PPPoE, VPN, or AOL. Doubleclick the Local Area Connection.

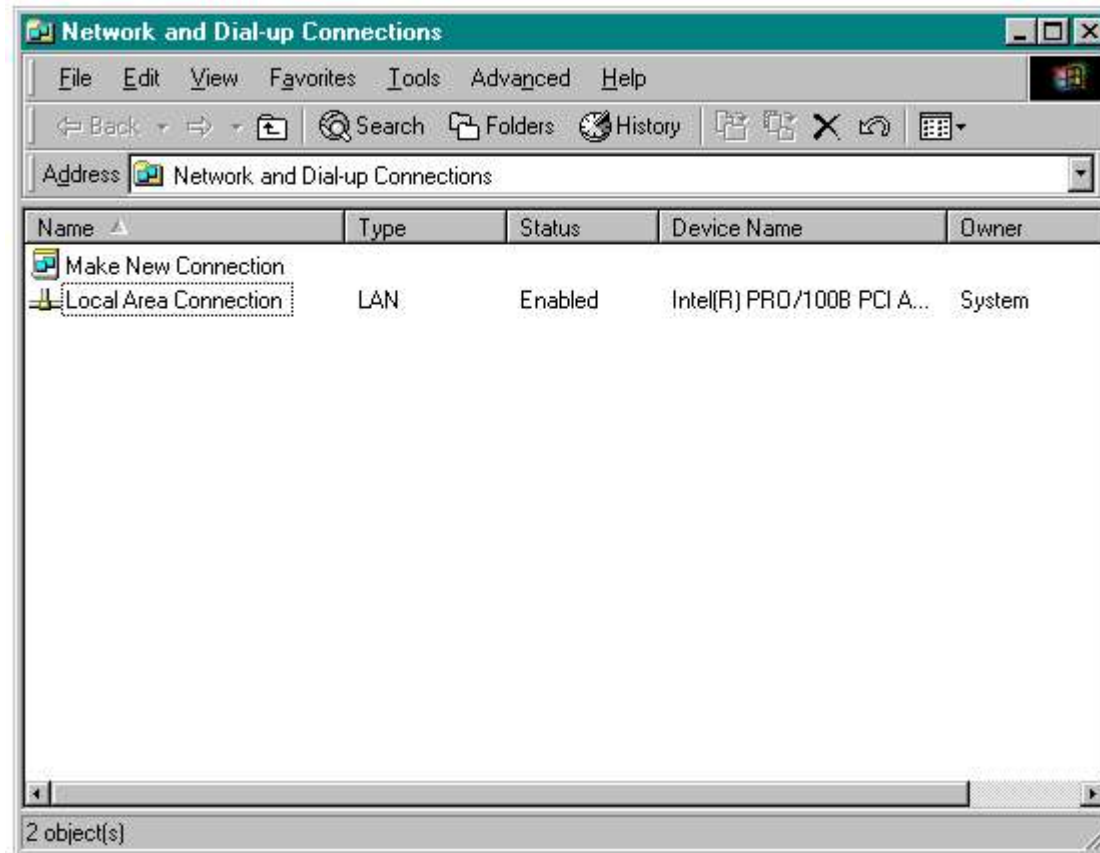


Figure 7-3

3. The Local Area Connection Status screen will appear, as shown in Figure 7-3. Click the Properties button.

4. Select Internet Protocol (TCP/IP), as shown in Figure 7-4, and click the Properties button.

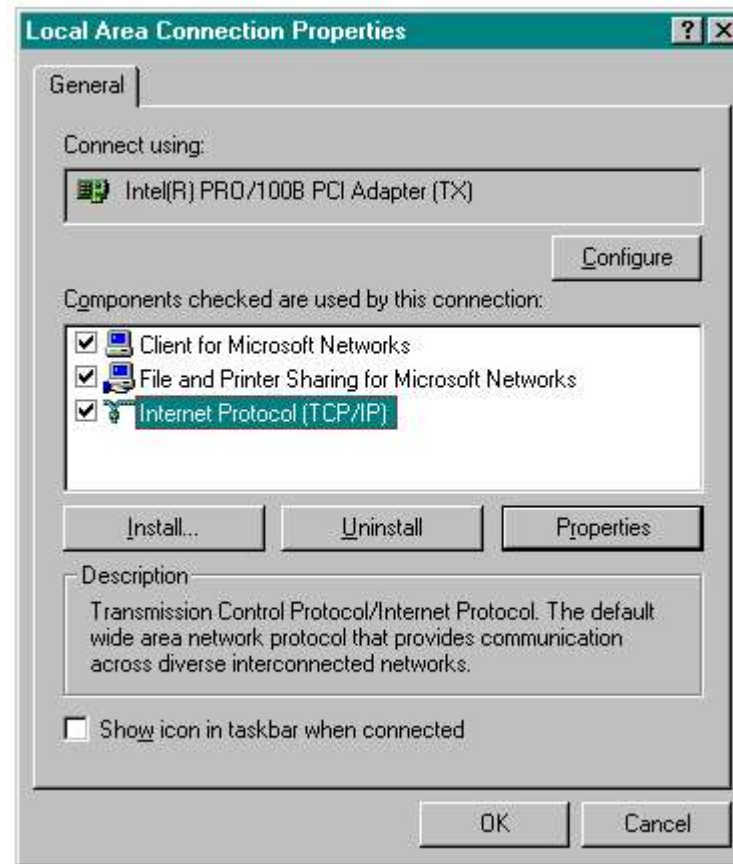


Figure 7-4

5. Select Obtain an IP address automatically, as shown in Figure 7-5. Once the new window appears, click the OK button. Click the OK button again to complete the PC configuration.

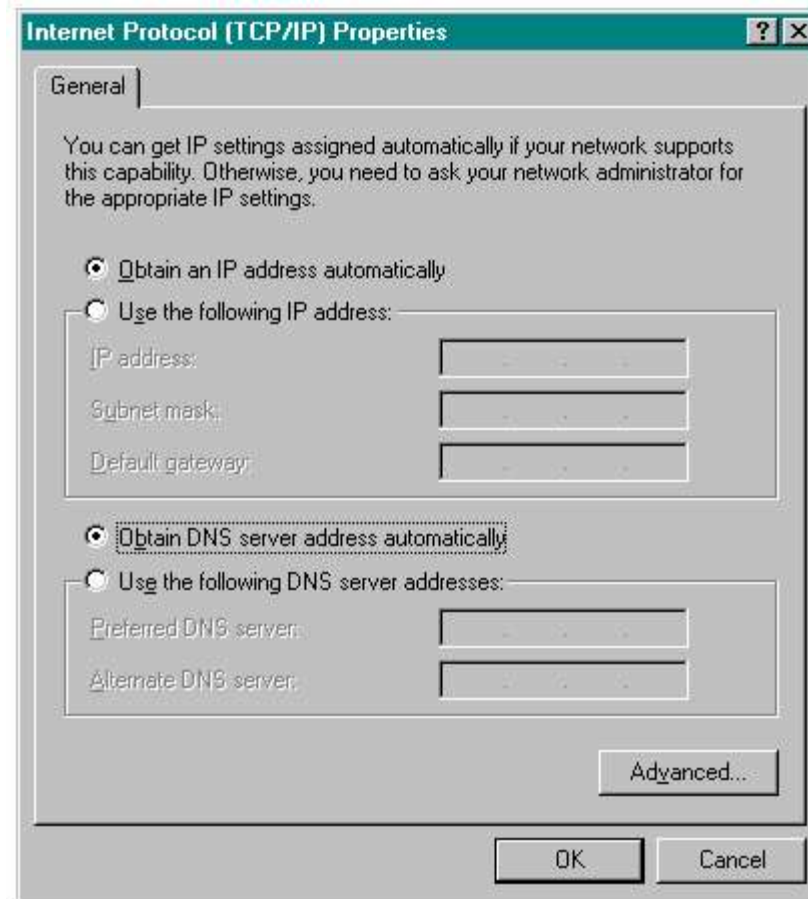


Figure 7-5

6. Restart your computer.

Configuring Windows XP PCs

The following instructions assume you are running Windows XP with the default interface. If you are using the Classic interface (where the icons and menus look like previous Windows versions), please follow the instructions for Windows 2000.

- 1. Click to the Network screen by clicking the Start button and then Control Panel. From there, click the Network and Internet Connections icon and then the Network Connections icon.**
- 2. Select the Local Area Connection icon for the applicable Ethernet adapter (usually it is the first Local Area Connection listed). Double-click the Local Area Connection.**

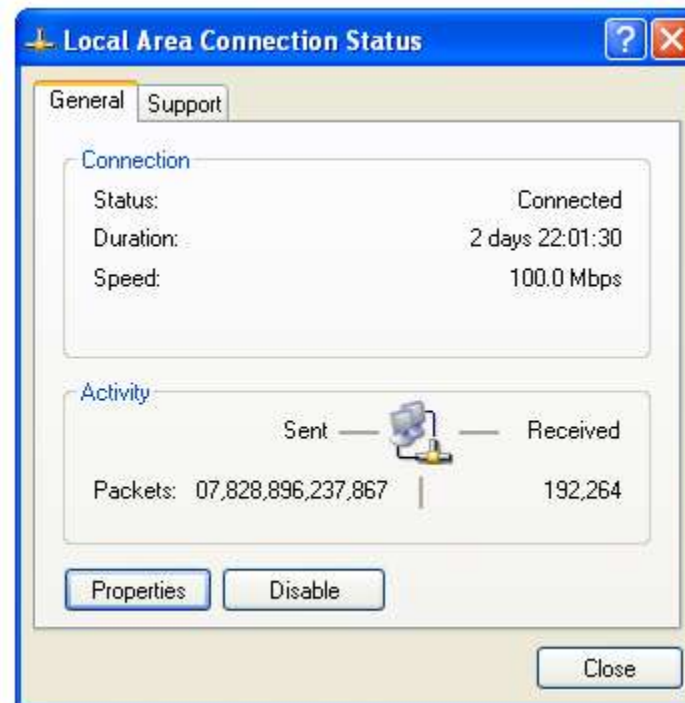


Figure 7- 6

3. The Local Area Connection Status screen will appear, as shown in Figure 7-6. Click the Properties button.
4. Select Internet Protocol (TCP/IP), as shown in Figure 7-7, and click the Properties button.

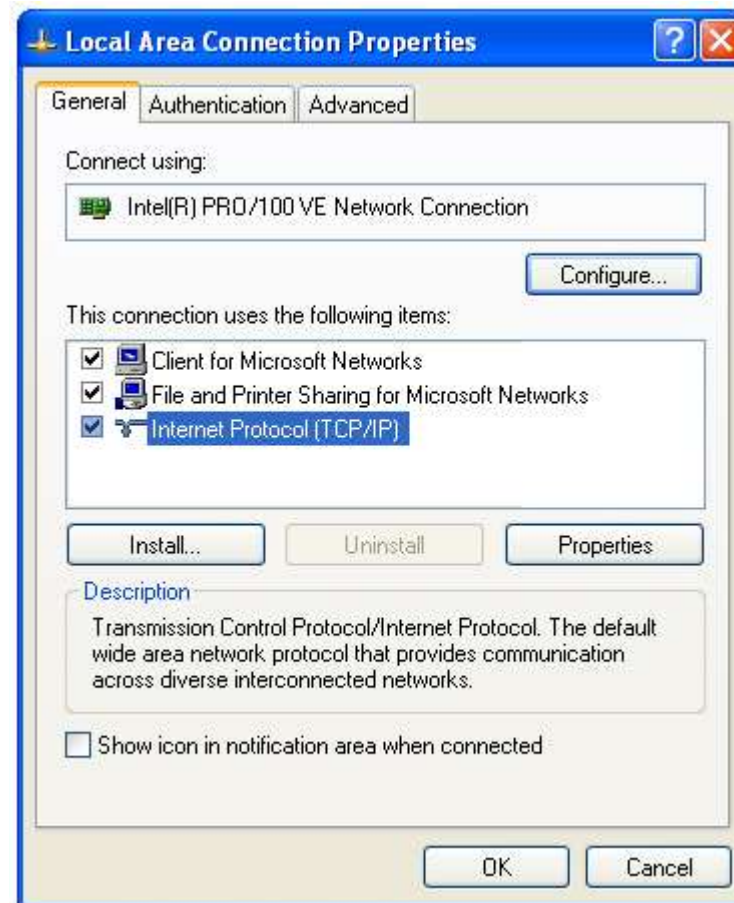


Figure 7-7

5. Select Obtain an IP address automatically, as shown in Figure 7- 8. Once the new window appears, click the OK button. Click the OK button again (or the Close button if any settings were changed) to complete the PC configuration.

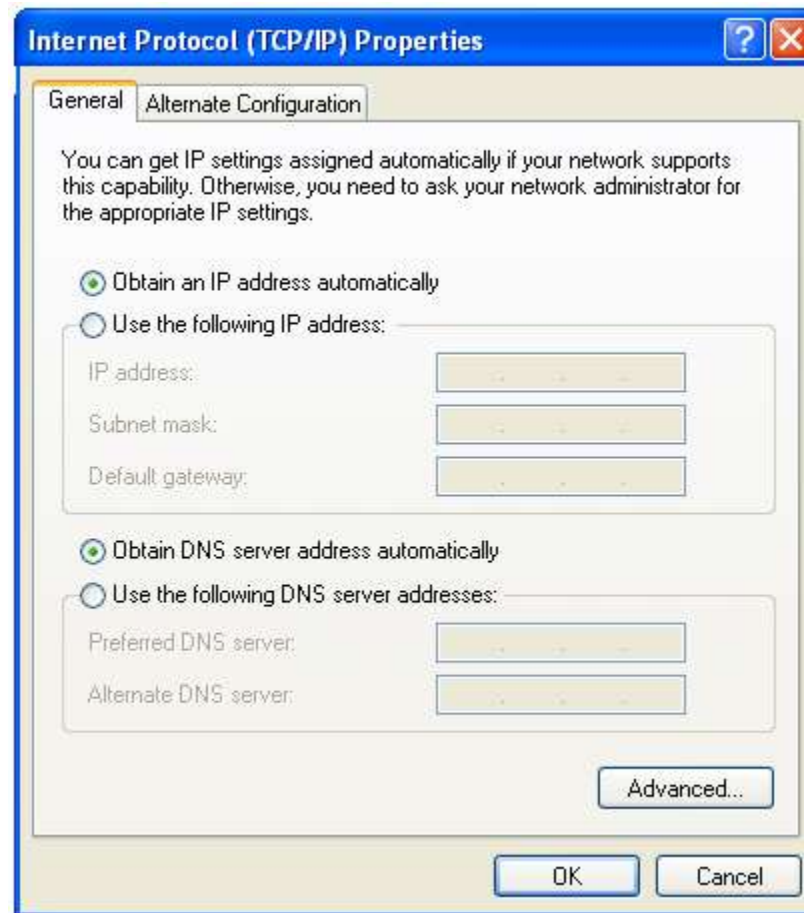


Figure 7- 8

6. Restart your computer.